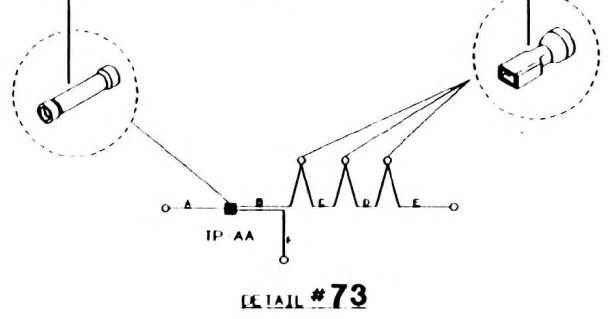
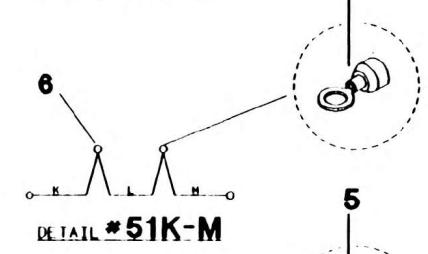
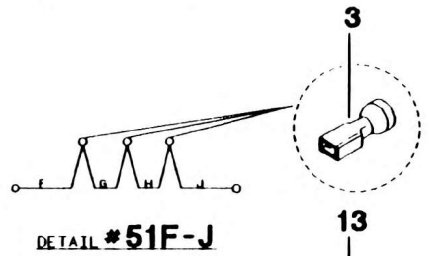
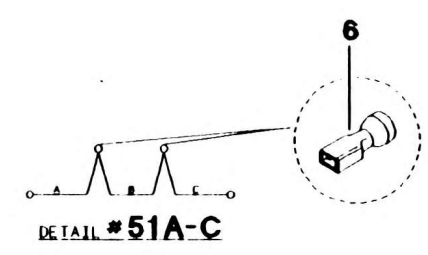
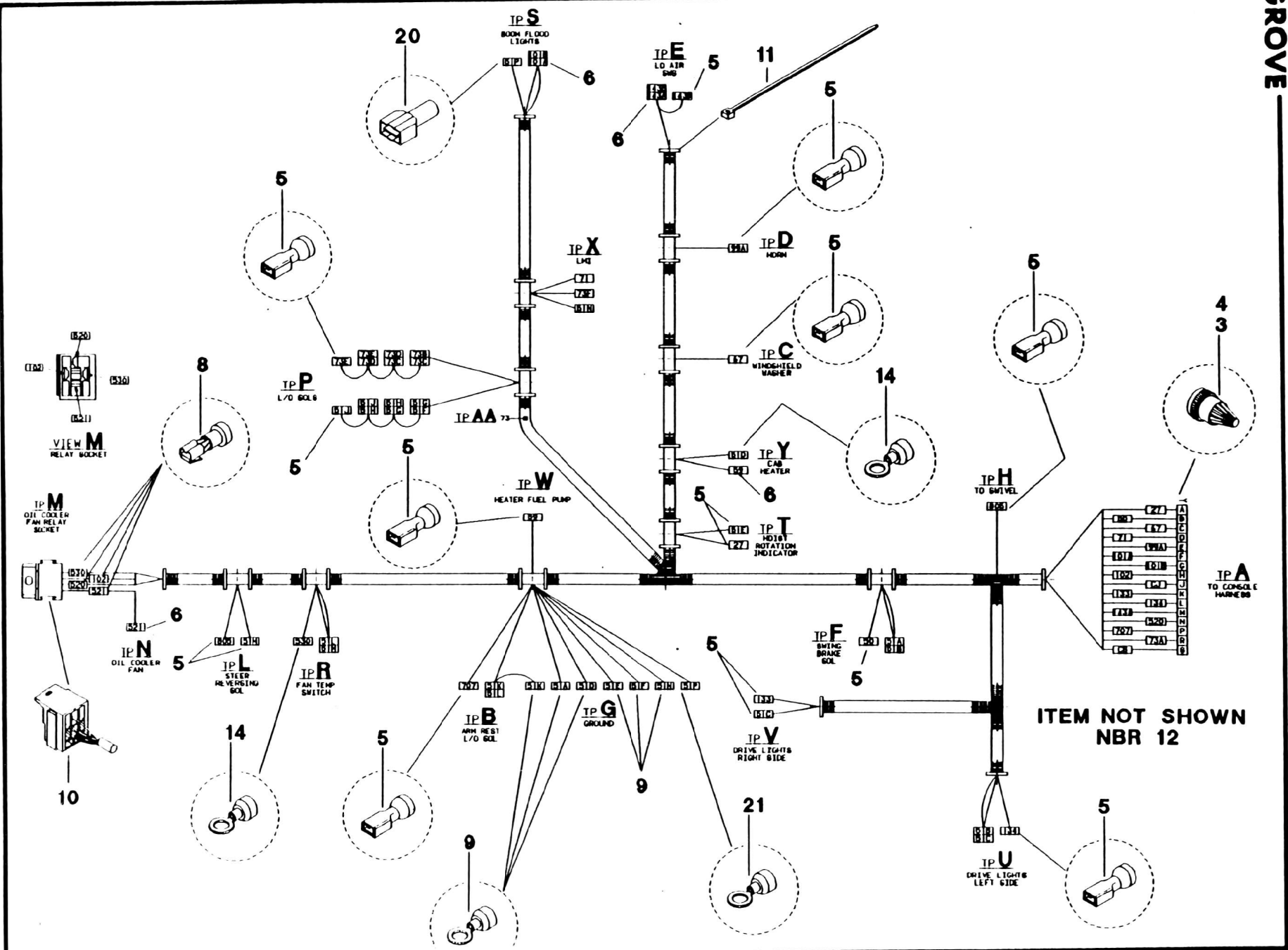


| WIRE NO | COLOR | PAK SIZE | PKY | LEN IN | IN | TH | D/M ITEM NO | REMARKS | IP | D/M ITEM NO | REMARKS |
|---------|--------|----------|-----|--------|----|-------|-------------|---------|----|-------------|---------------|
| 27 | YELLOW | 14 | 3 | 60 | A | 4 | A | 4 | T | 5 | |
| 30 | | 14 | 2 | 27 | A | 4 | A | 4 | F | 5 | |
| 61A | | 14 | 4 | 6 | B | 9 | G | 9 | G | STRIP | SEE DETAIL |
| 61B | | 14 | 3 | 2 | F | 3 | F | 3 | U | STRIP | SEE DETAIL |
| 61C | | 14 | 7 | 2 | U | 3 | U | 3 | V | STRIP | SEE DETAIL |
| 61D | | 14 | 4 | 4 | G | 9 | G | 9 | Y | 14 | |
| 61E | | 14 | 2 | 10 | G | 34 | G | 9 | T | 5 | |
| 61F | | 16 | 8 | 96 | G | 9 | G | 9 | P | STRIP | SEE DETAIL |
| 61G | | 16 | 3 | 3 | P | 3 | P | 3 | P | STRIP | SEE DETAIL |
| 61H | | 16 | 3 | 3 | P | 3 | P | 3 | P | STRIP | SEE DETAIL |
| 61J | | 16 | 3 | 3 | P | 3 | P | 3 | P | STRIP | SEE DETAIL |
| 61K | | 16 | 6 | 6 | G | 6 | G | 6 | B | STRIP | SEE DETAIL |
| 61L | | 14 | 3 | 10 | B | 46 | B | STRIP | R | STRIP | SEE DETAIL |
| 61M | | 14 | 1 | 22 | R | STRIP | R | STRIP | L | 6 | |
| 61N | | 14 | 11 | 2 | G | 134 | G | 9 | X | STRIP | |
| 61P | | 12 | 12 | 8 | S | 152 | S | 20 | G | 21 | |
| 69 | | 14 | 3 | 2 | H | 62 | H | 5 | Y | 6 | |
| 67 | | 14 | 8 | 8 | A | 104 | A | 4 | C | 5 | |
| 71 | | 14 | 13 | 4 | A | 160 | A | 4 | X | STRIP | |
| 73A | | 14 | 9 | 3 | A | 111 | A | 4 | AA | STRIP | SEE DETAIL |
| 73B | | 16 | 11 | 11 | AA | STRIP | AA | STRIP | P | STRIP | SEE DETAIL |
| 73C | | 16 | 3 | 3 | P | STRIP | P | STRIP | P | STRIP | SEE DETAIL |
| 73D | | 16 | 3 | 3 | P | STRIP | P | STRIP | P | STRIP | SEE DETAIL |
| 73E | | 16 | 3 | 3 | P | STRIP | P | STRIP | P | STRIP | SEE DETAIL |
| 73F | | 14 | 4 | 1 | AA | STRIP | AA | STRIP | X | STRIP | |
| 99A | | 14 | 10 | 2 | A | 122 | A | 4 | O | 5 | |
| 101A | | 12 | 14 | 10 | A | 178 | A | 4 | B | 6 | CRIMP W/ 101B |
| 101B | | 12 | 14 | 10 | A | 178 | A | 4 | S | STRIP | CRIMP W/ 101A |
| 102 | | 14 | 13 | 156 | A | 4 | A | 4 | H | 8 | |
| 133 | | 14 | 3 | 8 | A | 44 | A | 4 | W | 5 | |
| 134 | | 14 | 2 | 10 | A | 34 | A | 4 | U | 5 | |
| 143A | | 14 | 12 | 2 | A | 146 | A | 4 | E | 6 | CRIMP W/ 143B |
| 143B | | 14 | 3 | 3 | F | STRIP | F | STRIP | E | 5 | |
| 520 | | 12 | 13 | 156 | A | 4 | A | 4 | M | 8 | |
| 621 | | 12 | 8 | 8 | H | 8 | H | 8 | N | 6 | |
| 630 | | 14 | 4 | 10 | B | 14 | B | 14 | B | 6 | |
| 707 | | 14 | 6 | 6 | A | 60 | A | 4 | B | 6 | |
| 806 | | 14 | 9 | 4 | H | 122 | H | 6 | L | 6 | |
| CJ | | 14 | 1 | 12 | A | 4 | A | 4 | A | STRIP | |
| CS | YELLOW | 14 | 1 | 12 | A | 4 | A | 4 | A | STRIP | |





ITEM NOT SHOWN
NBR 12